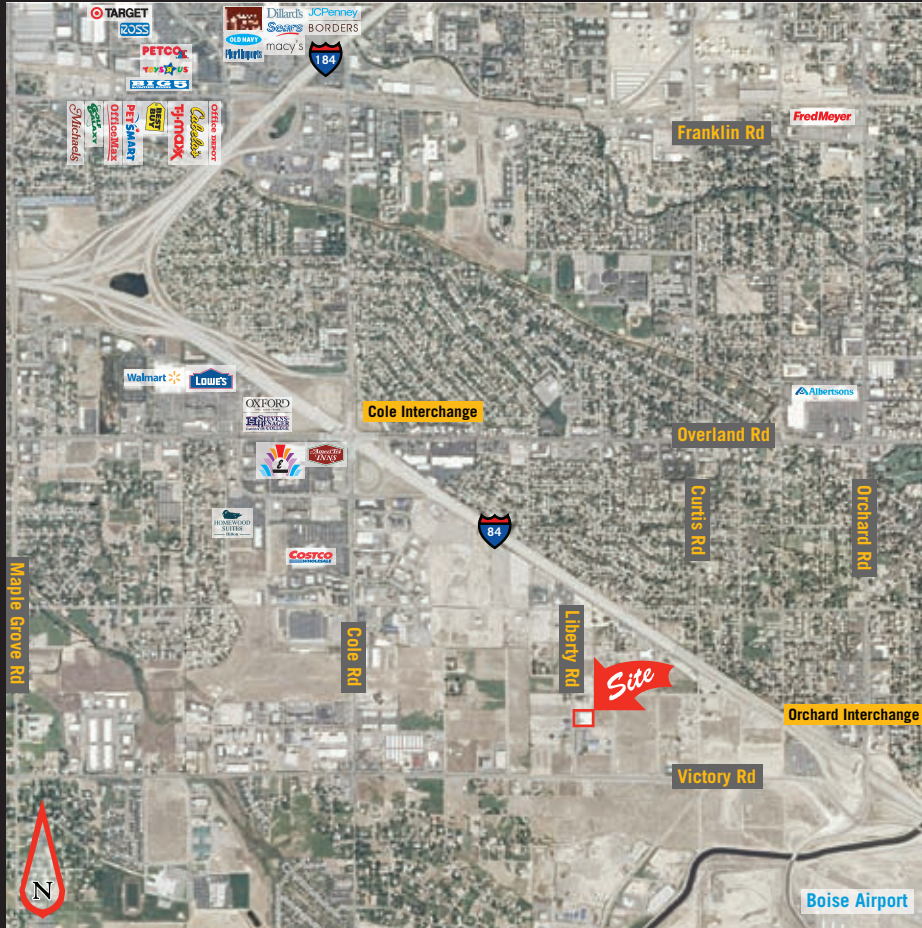
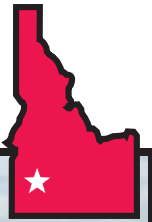


FOR LEASE OFFICE/WAREHOUSE SPACE

Boise, ID
2752 S. Liberty St



LOCATION

- ✦ 2752 S. Liberty St, Boise, ID

SPACE AVAILABLE

- ✦ ±20,000 SF (100' x 200')
- ±19,038 SF Warehouse
- ±962 SF office

PRICE & TERMS

- ✦ \$0.35/SF/month
- ✦ Triple Net Estimate \$0.10/SF/month

BUILDING DESCRIPTION

- ✦ Steel frame & skin
- ✦ Gable roof 10"–15" clear
- ✦ Two dock high doors
- ✦ Office air conditioned
- ✦ Fully fire sprinklered
- ✦ Year built: 2001

SITE DESCRIPTION

- ✦ Zoning M-1D
- ✦ Fenced Yard

FEATURES

- ✦ Convenient to I-84 & Boise Airport

FOR LEASE OFFICE/WAREHOUSE SPACE

Boise, ID
2752 S. Liberty St

